



MORGAN AND MORECAMBE OFFSHORE WIND FARMS: TRANSMISSION ASSETS

Environmental Statement

Volume 2, Figures - Part 1 of 5



September 2024
Rev: ES Issue

MOR001-FLO-CON-ENV-FIG-0004
MRCNS-J3303-RPS-10161

PINS Reference: EN020028
APFP Regulations: 5(2)(a)
Document reference: F2.10

Document status					
Version	Purpose of document	Approved by	Date	Approved by	Date
ES	For issue	AS	September 2024	IM	September 2024

The report has been prepared for the exclusive use and benefit of the Applicants and solely for the purpose for which it is provided. Unless otherwise agreed in writing by RPS Group Plc, any of its subsidiaries, or a related entity (collectively 'RPS') no part of this report should be reproduced, distributed or communicated to any third party. RPS does not accept any liability if this report is used for an alternative purpose from which it is intended, nor to any third party in respect of this report. The report does not account for any changes relating to the subject matter of the report, or any legislative or regulatory changes that have occurred since the report was produced and that may affect the report.

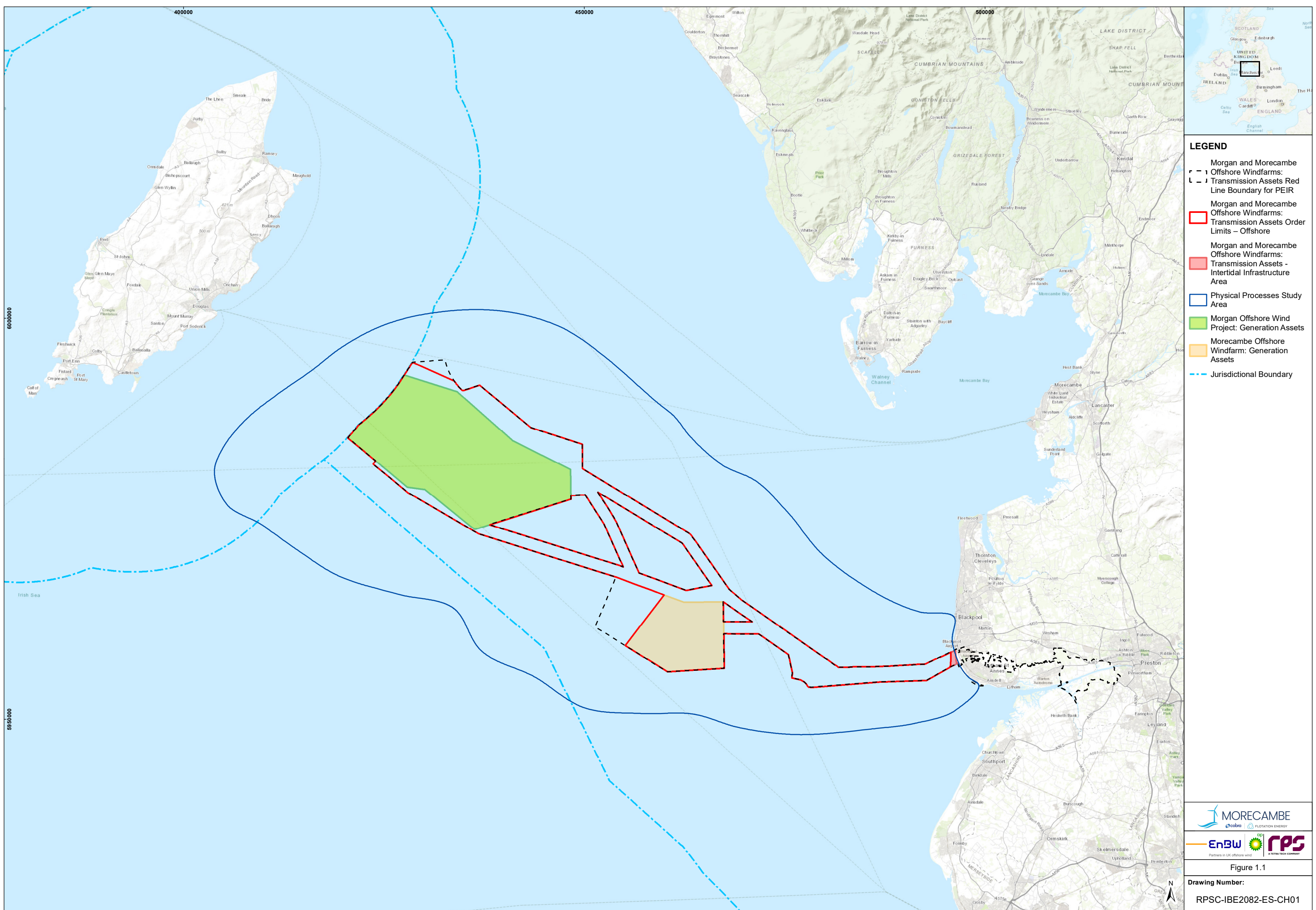
The report has been prepared using the information provided to RPS by its client, or others on behalf of its client. To the fullest extent permitted by law, RPS shall not be liable for any loss or damage suffered by the client arising from fraud, misrepresentation, withholding of information material relevant to the report or required by RPS, or other default relating to such information, whether on the client's part or that of the other information sources, unless such fraud, misrepresentation, withholding or such other default is evident to RPS without further enquiry. It is expressly stated that no independent verification of any documents or information supplied by the client or others on behalf of the client has been made. The report shall be used for general information only.

Prepared by:

RPS

Prepared for:

**Morgan Offshore Wind Limited,
Morecambe Offshore Windfarm Ltd**



- LEGEND**
- Morgan and Morecambe Offshore Windfarms: Transmission Assets Red Line Boundary for PEIR
 - Morgan and Morecambe Offshore Windfarms: Transmission Assets Order Limits – Offshore
 - Morgan and Morecambe Offshore Windfarms: Transmission Assets - Intertidal Infrastructure Area
 - Physical Processes Study Area
 - Morgan Offshore Wind Project: Generation Assets
 - Morecambe Offshore Windfarm: Generation Assets
 - Jurisdictional Boundary

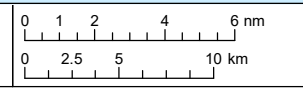


Figure 1.1

Drawing Number:
RPSC-IBE2082-ES-CH01

Project Name:
MORGAN AND MORECAMBE OFFSHORE WIND FARMS: TRANSMISSION ASSETS

Drawing Title:
PHYSICAL PROCESSES STUDY AREA

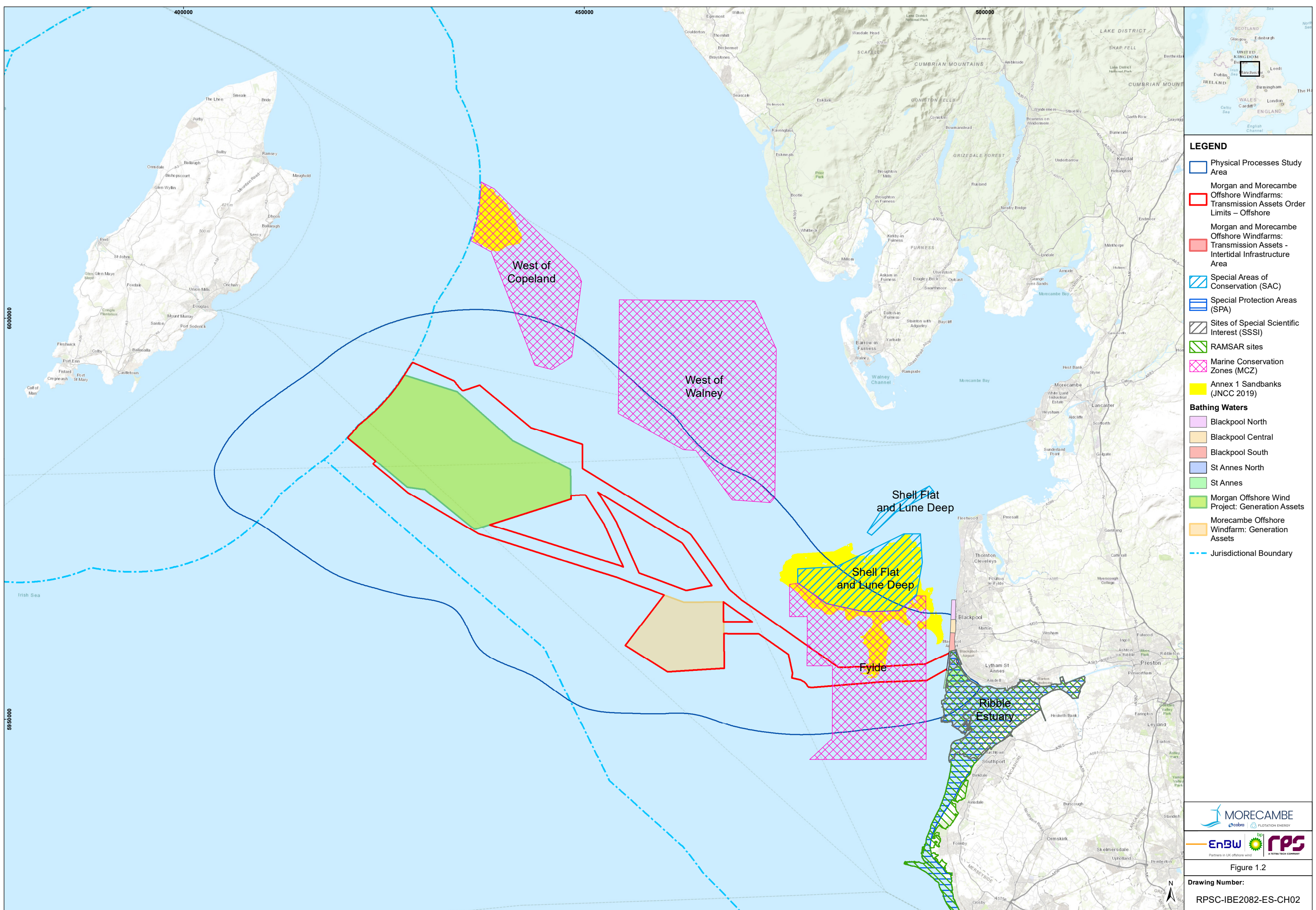


Geodetic Information:
Datum: ETRS 1989
Projection: ETRS 1989 UTM Zone 30N
Scale@379mmx231mm: 1:400,000

Data Sources: Client

Service Layer Credits: Sources: Esri, HERE, Garmin, Intermap, increment P Corp., GEBCO, USGS, FAO, NPS, NRCAN, GeoBase, IGN, Kadaster NL, Ordnance Survey, Esri Japan, METI, Esri China (Hong Kong), (c) OpenStreetMap contributors, and the GIS User Community

VER	DATE	DETAILS	BY	CHECK
02	03/07/24	Draft Final	RMCC	NRS
03	27/08/24	Final ES	NRS	RMCC



- LEGEND**
- Physical Processes Study Area
 - Morgan and Morecambe Offshore Windfarms: Transmission Assets Order Limits – Offshore
 - Morgan and Morecambe Offshore Windfarms: Transmission Assets - Intertidal Infrastructure Area
 - Special Areas of Conservation (SAC)
 - Special Protection Areas (SPA)
 - Sites of Special Scientific Interest (SSSI)
 - RAMSAR sites
 - Marine Conservation Zones (MCZ)
 - Annex 1 Sandbanks (JNCC 2019)
 - Bathing Waters
 - Blackpool Central
 - Blackpool South
 - St Annes North
 - St Annes
 - Morgan Offshore Wind Project: Generation Assets
 - Morecambe Offshore Windfarm: Generation Assets
 - Jurisdictional Boundary

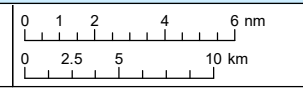


Figure 1.2

Drawing Number:
RPSC-IBE2082-ES-CH02

Project Name:
MORGAN AND MORECAMBE OFFSHORE WIND FARMS: TRANSMISSION ASSETS

Drawing Title:
PHYSICAL PROCESSES DESIGNATED AREAS

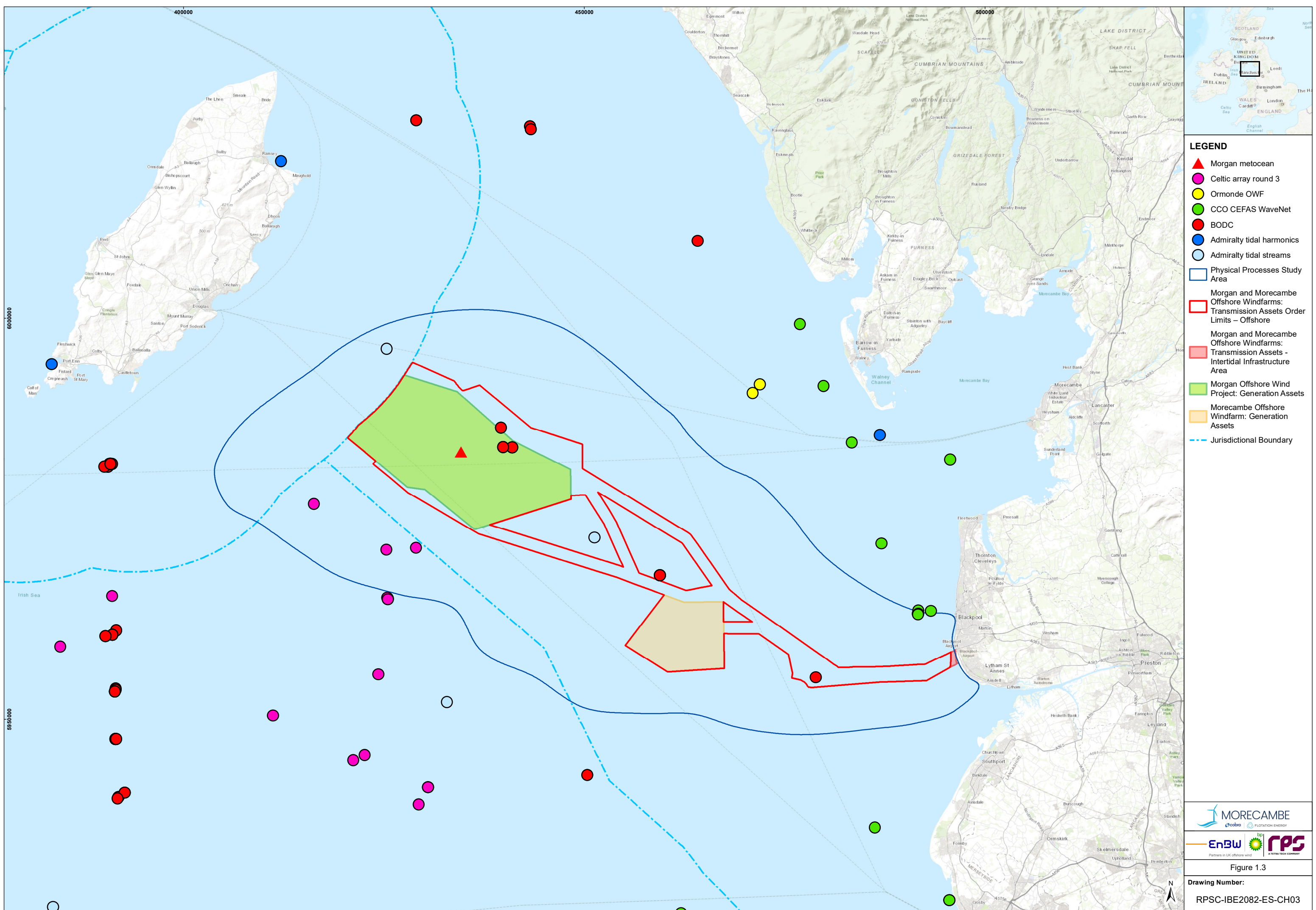


Geodetic Information:
Datum: ETRS 1989
Projection: ETRS 1989 UTM Zone 30N
Scale@379mmx231mm: 1:400,000

Data Sources: Client, The Crown Estate, MMO, NRW, ScotGov, MarineRegions.org, JNCC Mapper

Service Layer Credits: Sources: Esri, HERE, Garmin, Intermap, increment P Corp., GEBCO, USGS, FAO, NPS, NRCAN, GeoBase, IGN, Kadaster NL, Ordnance Survey, Esri Japan, METI, Esri China (Hong Kong), (c) OpenStreetMap contributors, and the GIS User Community

VER	DATE	DETAILS	BY	CHECK
03	03/07/24	Final Draft	RMCC	NRS
04	27/08/24	Final ES	NRS	RMCC



LEGEND

- ▲ Morgan metocean
- Celtic array round 3
- Ormonde OWF
- CCO CEFAS WaveNet
- BODC
- Admiralty tidal harmonics
- Admiralty tidal streams
- ▭ Physical Processes Study Area
- ▭ Morgan and Morecambe Offshore Windfarms: Transmission Assets Order Limits - Offshore
- ▭ Morgan and Morecambe Offshore Windfarms: Transmission Assets - Intertidal Infrastructure Area
- ▭ Morgan Offshore Wind Project: Generation Assets
- ▭ Morecambe Offshore Windfarm: Generation Assets
- Jurisdictional Boundary

MORECAMBE
coastal bp FLOTATION ENERGY

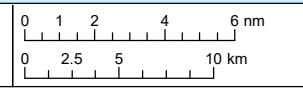
EnBW **RPS**
Partners in UK offshore wind A TOTAL TECH COMPANY

Figure 1.3

Drawing Number:
RPSC-IBE2082-ES-CH03

Project Name:
MORGAN AND MORECAMBE OFFSHORE WIND FARMS: TRANSMISSION ASSETS

Drawing Title:
LOCATIONS OF SITE SPECIFIC AND HISTORIC METOCEAN DATA

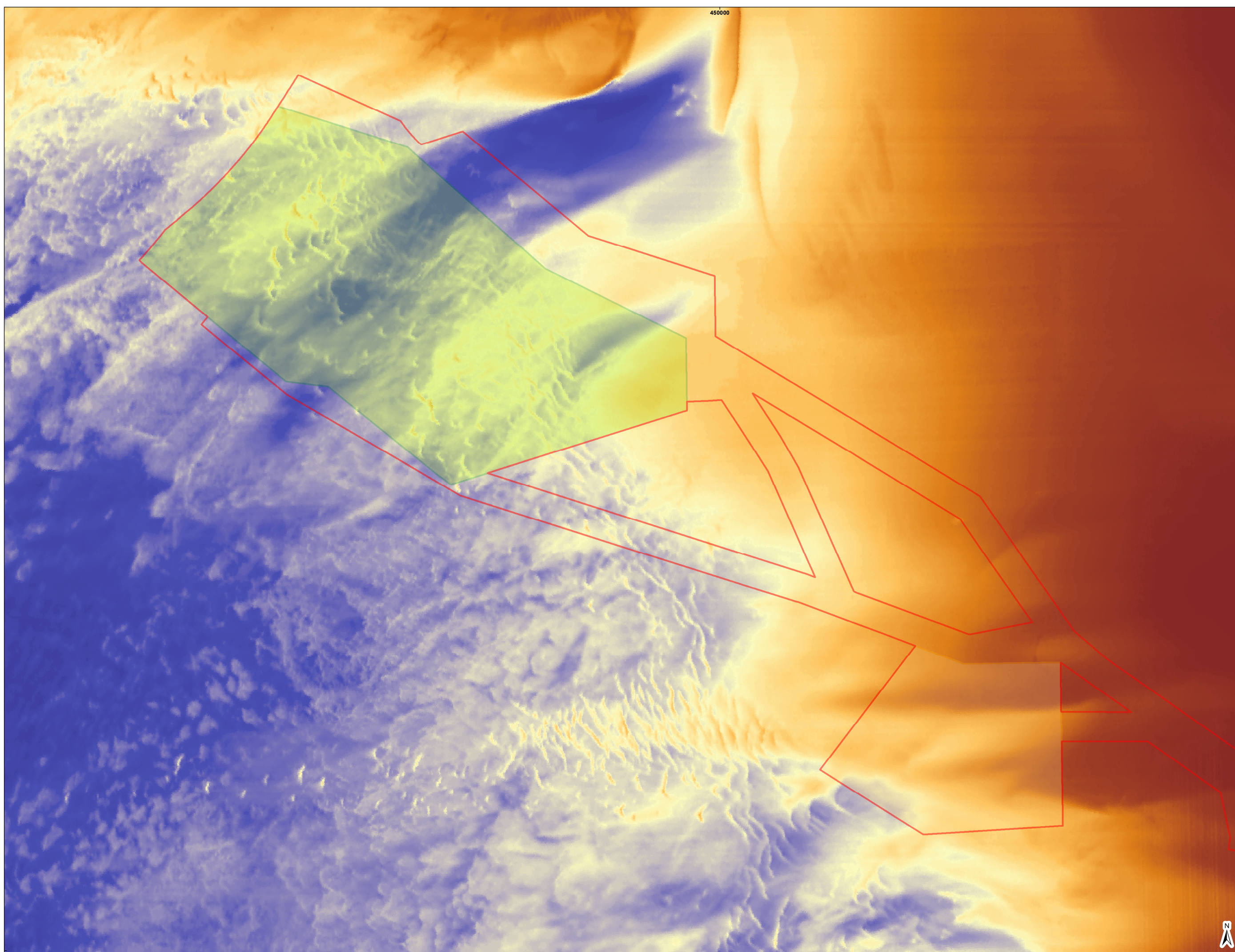


Geodetic Information:
 Datum: ETRS 1989
 Projection: ETRS 1989 UTM Zone 30N
 Scale@379mmx231mm: 1:400,000

Data Sources: Client, The Crown Estate, MMO, NRW, ScotGov, MarineRegions.org, JNCC Mapper, EMODnet

Service Layer Credits: Sources: Esri, HERE, Garmin, Intermap, increment P Corp., GEBCO, USGS, FAO, NPS, NRCAN, GeoBase, IGN, Kadaster NL, Ordnance Survey, Esri Japan, METI, Esri China (Hong Kong), (c) OpenStreetMap contributors, and the GIS User Community

VER	DATE	DETAILS	BY	CHECK
03	03/07/24	Draft Final	RMCC	NRS
04	27/08/24	Final ES	NRS	RMCC



LEGEND

- Morgan and Morecambe Offshore Windfarms: Transmission Assets Order Limits - Offshore
- Morgan Offshore Wind Project: Generation Assets
- Morecambe Offshore Windfarm: Generation Assets

Bathymetry (m MSL)

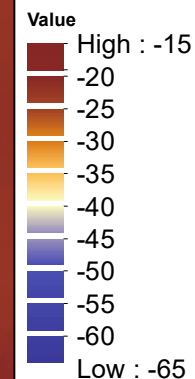
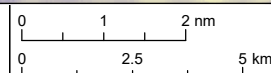


Figure 1.4

Drawing Number:
RPSC_IBE2082_ES_CH08

Project Name:
MORGAN AND MORECAMBE OFFSHORE WIND FARMS: TRANSMISSION ASSETS

Drawing Title:
BATHYMETRIC DATA ILLUSTRATING SANDWAVE FEATURES

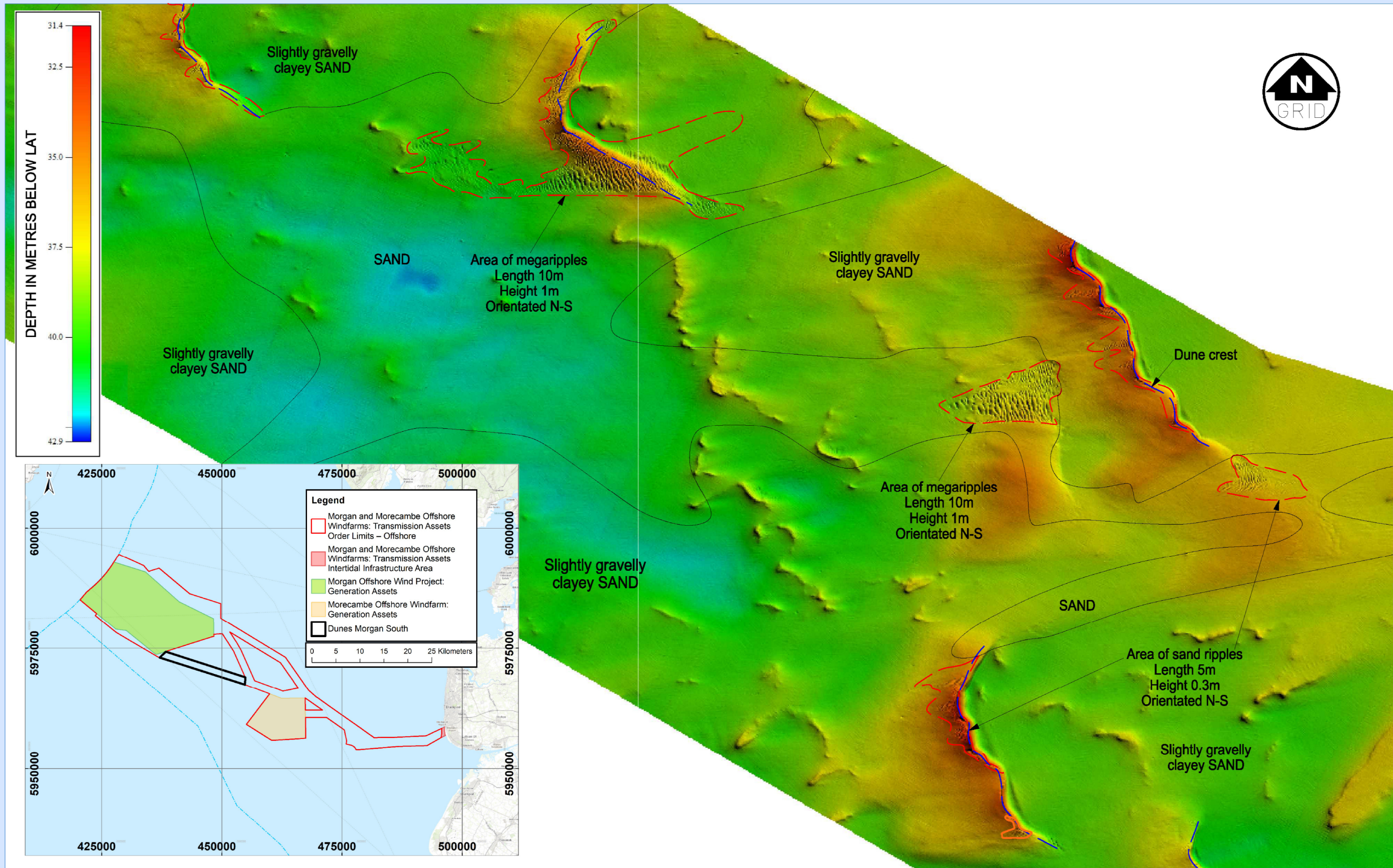


Geodetic Information:
Datum: ETRS 1989
Projection: ETRS 1989 UTM Zone 30N
Scale@379mmx231mm: 1:170,904

Data Sources: EMODnet, MEDIN, CCO, Marine Data Exchange

Service Layer Credits: Sources: Esri, HERE, Garmin, Intermap, increment P Corp., GEBCO, USGS, FAO, NPS, NRCAN, GeoBase, IGN, Kadaster NL, Ordnance Survey, Esri Japan, METI, Esri China (Hong Kong), (c) OpenStreetMap contributors, and the GIS User Community

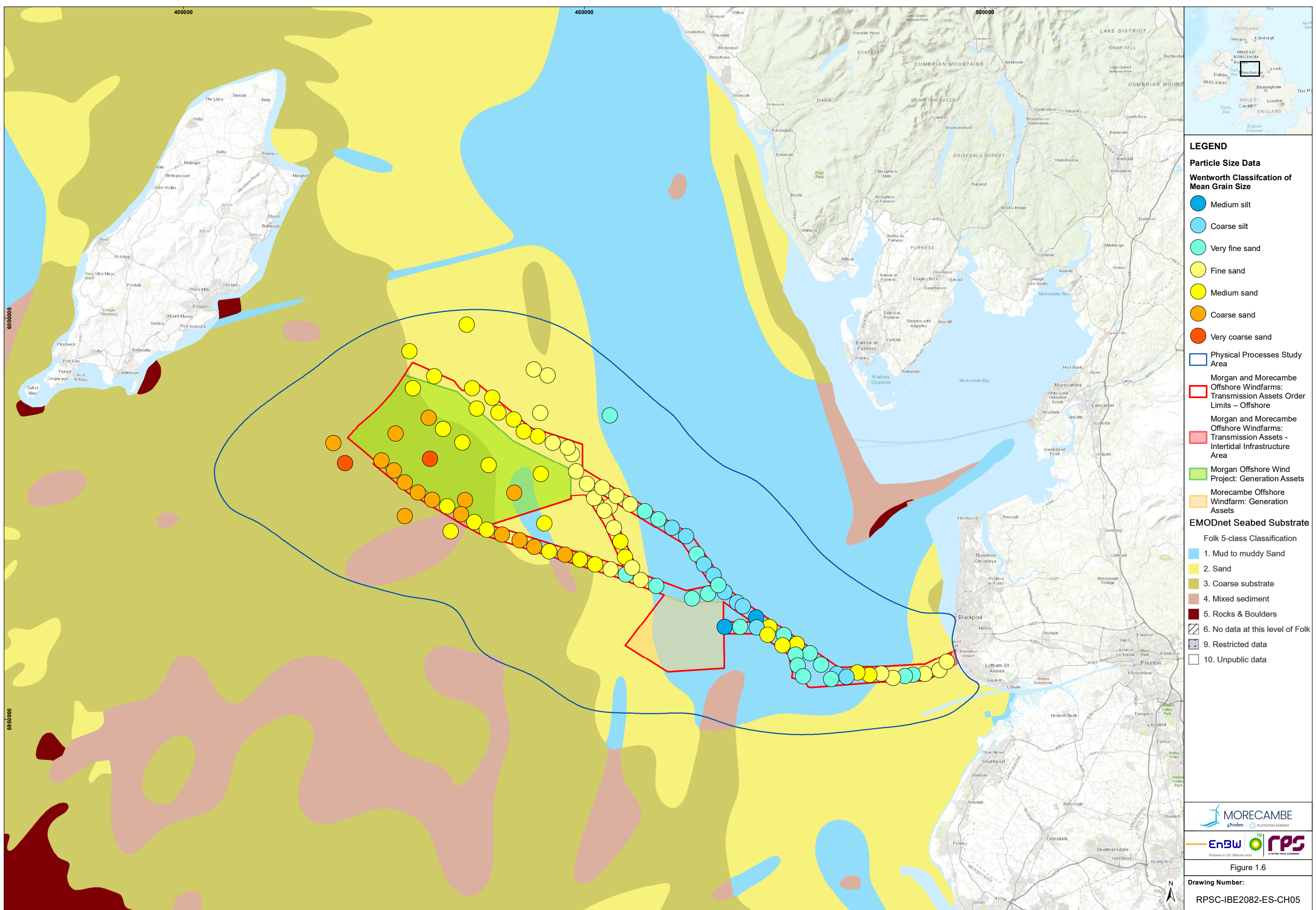
VER	DATE	DETAILS	BY	CHECK
02	03/07/24	Draft Final	RMcC	NRS
03	27/08/24	Final ES	NRS	RMcC



Scale 1 : 12 500
 ETRS89/UTM Zone 30N (3°W)

MBES
 Illustrating dunes on Morgan South

Figure 1.5



LEGEND

Particle Size Data

Wentworth Classification of Mean Grain Size

- Medium silt
- Coarse silt
- Very fine sand
- Fine sand
- Medium sand
- Coarse sand
- Very coarse sand

□ Physical Processes Study Area

Offshore Windfarms:
 □ Transmission Assets Order Limits – Offshore

Intertidal Infrastructure Area:
 □ Morgan and Morecambe Offshore Windfarms: Transmission Assets - Intertidal Infrastructure Area

Generation Assets:
 □ Morgan Offshore Wind Project: Generation Assets
 □ Morecambe Offshore Windfarm: Generation Assets

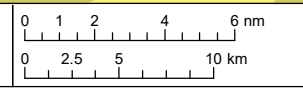
EMODnet Seabed Substrate

Folk 5-class Classification

- 1. Mud to muddy Sand
- 2. Sand
- 3. Coarse substrate
- 4. Mixed sediment
- 5. Rocks & Boulders
- 6. No data at this level of Folk
- 9. Restricted data
- 10. Unpublic data

Project Name:
 MORGAN AND MORECAMBE OFFSHORE WIND FARMS: TRANSMISSION ASSETS

Drawing Title:
 EMODNET AND GARDLINE SEABED SUBSTRATE



Geodetic Information:
 Datum: ETRS 1989
 Projection: ETRS 1989 UTM Zone 30N
 Scale@379mmx231mm: 1:400,000

Data Sources: Client, Gardline, EMODnet

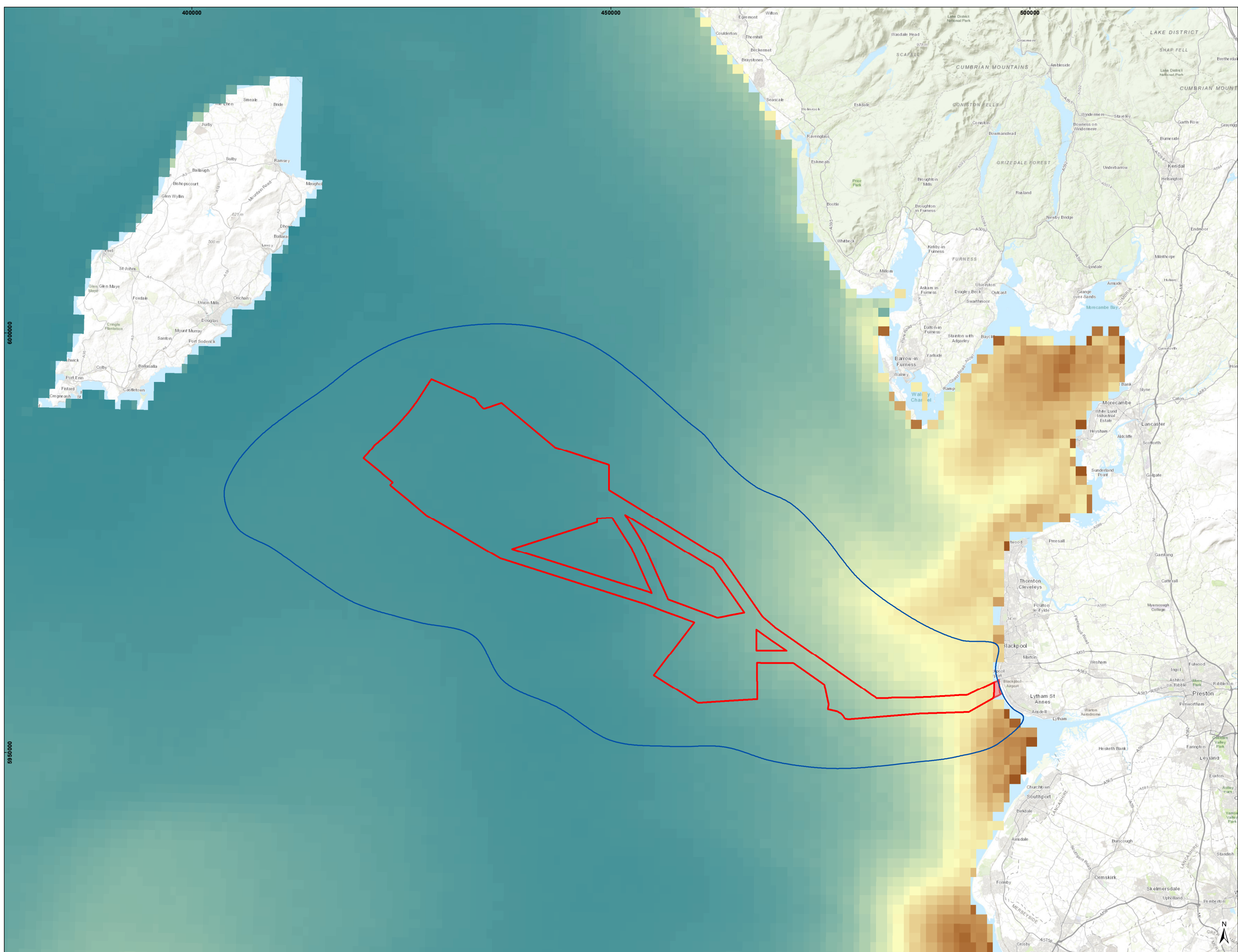
Service Layer Credits: Sources: Esri, HERE, Garmin, Intermap, increment P Corp., GEBCO, USGS, FAO, NPS, NRCAN, GeoBase, IGN, Kadaster NL, Ordnance Survey, Esri Japan, METI, Esri China (Hong Kong), (c) OpenStreetMap contributors, and the GIS User Community

VER	DATE	DETAILS	BY	CHECK
02	03/07/24	Final Draft	RMcC	NRS
03	27/08/24	Final ES	NRS	RMcC

Drawing Number:
 RPSC-IBE2082-ES-CH05



Figure 1.6



LEGEND

- Physical Processes Study Area
- Morgan and Morecambe Offshore Windfarms: Transmission Assets Order Limits - Offshore
- Morgan and Morecambe Offshore Windfarms: Transmission Assets - Intertidal Infrastructure Area

Mean annual SPM mg/l

High : 30

25

20

15

10

5

Low : 0

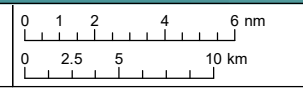


Figure 1.7

Drawing Number:
RPSC-IBE2082-ES-CH06

Project Name:
MORGAN AND MORECAMBE OFFSHORE WIND FARMS: TRANSMISSION ASSETS

Drawing Title:
PHYSICAL PROCESSES DISTRIBUTION OF AVERAGE NON-ALGAL SPM - CEFAS

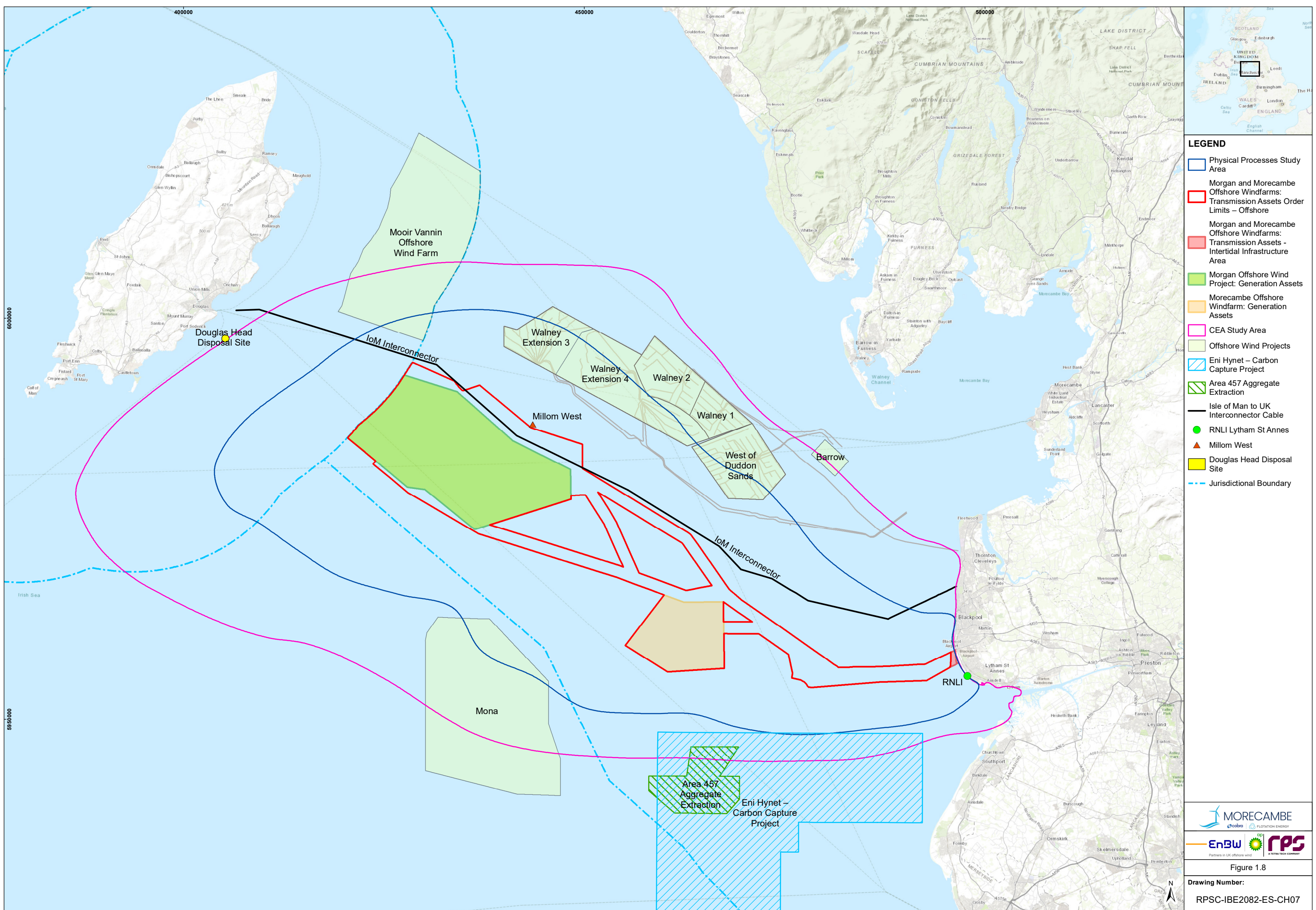


Geodetic Information:
Datum: ETRS 1989
Projection: ETRS 1989 UTM Zone 30N
Scale@379mmx231mm: 1:400,000

Data Sources: Client, CEFAS

Service Layer Credits: Sources: Esri, HERE, Garmin, Intermap, increment P Corp., GEBCO, USGS, FAO, NPS, NRCAN, GeoBase, IGN, Kadaster NL, Ordnance Survey, Esri Japan, METI, Esri China (Hong Kong), (c) OpenStreetMap contributors, and the GIS User Community

VER	DATE	DETAILS	BY	CHECK
02	03/07/24	Draft Final	RMCC	NRS
03	27/08/24	Final ES	NRS	RMCC



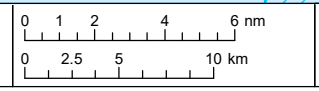
- LEGEND**
- Physical Processes Study Area
 - Morgan and Morecambe Offshore Windfarms: Transmission Assets Order Limits – Offshore
 - Morgan and Morecambe Offshore Windfarms: Transmission Assets - Intertidal Infrastructure Area
 - Morgan Offshore Wind Project: Generation Assets
 - Morecambe Offshore Windfarm: Generation Assets
 - CEA Study Area
 - Offshore Wind Projects
 - Eni Hynet – Carbon Capture Project
 - Area 457 Aggregate Extraction
 - Isle of Man to UK Interconnector Cable
 - RNLI Lytham St Annes
 - ▲ Millom West
 - Douglas Head Disposal Site
 - Jurisdictional Boundary



Figure 1.8
 Drawing Number:
 RPSC-IBE2082-ES-CH07

Project Name:
 MORGAN AND MORECAMBE OFFSHORE WIND FARMS: TRANSMISSION ASSETS

Drawing Title:
 PHYSICAL PROCESSES CUMULATIVE EFFECT ASSESSMENT - RELEVANT PROJECTS

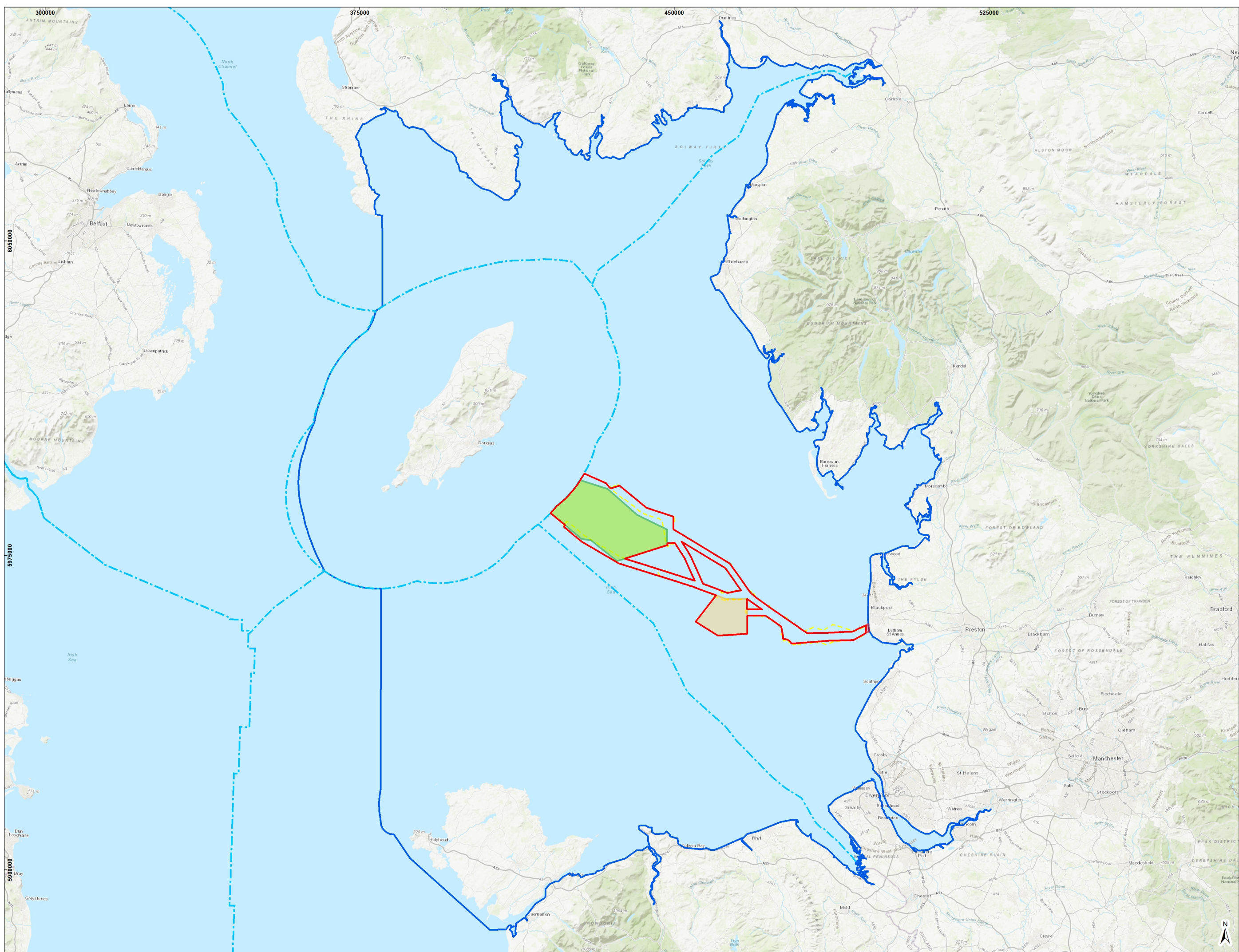


Geodetic Information:
 Datum: ETRS 1989
 Projection: ETRS 1989 UTM Zone 30N
 Scale@379mmx231mm: 1:400,000

Data Sources: Client, The Crown Estate, MMO, NRW, ScotGov, MarineRegions.org, JNCC Mapper, DEFRA, KIS-ORCA

Service Layer Credits: Sources: Esri, HERE, Garmin, Intermap, increment P Corp., GEBCO, USGS, FAO, NPS, NRCAN, GeoBase, IGN, Kadaster NL, Ordnance Survey, Esri Japan, METI, Esri China (Hong Kong), (c) OpenStreetMap contributors, and the GIS User Community
 Source: Esri, Maxar, Earthstar Geographics, and the GIS User Community

VER	DATE	DETAILS	BY	CHECK
03	03/07/24	Draft Final	RMCC	NRS
04	27/08/24	Final ES	NRS	RMCC



- LEGEND**
- Morgan and Morecambe Offshore Windfarms: Transmission Assets Order Limits – Offshore
 - Morgan and Morecambe Offshore Wind Farms: Transmission Assets - Intertidal Infrastructure Area
 - Morgan Offshore Wind Project: Generation Assets
 - Morecambe Offshore Windfarm: Generation Assets
 - Jurisdictional Boundary
 - Benthic Survey Area
 - Transmission Assets benthic subtidal and intertidal ecology study area

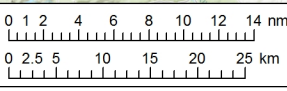


Figure 2.1

Drawing Number:
EOR0823-ES-BEN-E001-04

Project Name:
MORGAN AND MORECAMBE OFFSHORE WIND FARMS: TRANSMISSION ASSETS

Drawing Title:
TRANSMISSION ASSETS BENTHIC SUBTIDAL AND INTERTIDAL ECOLOGY STUDY AREA

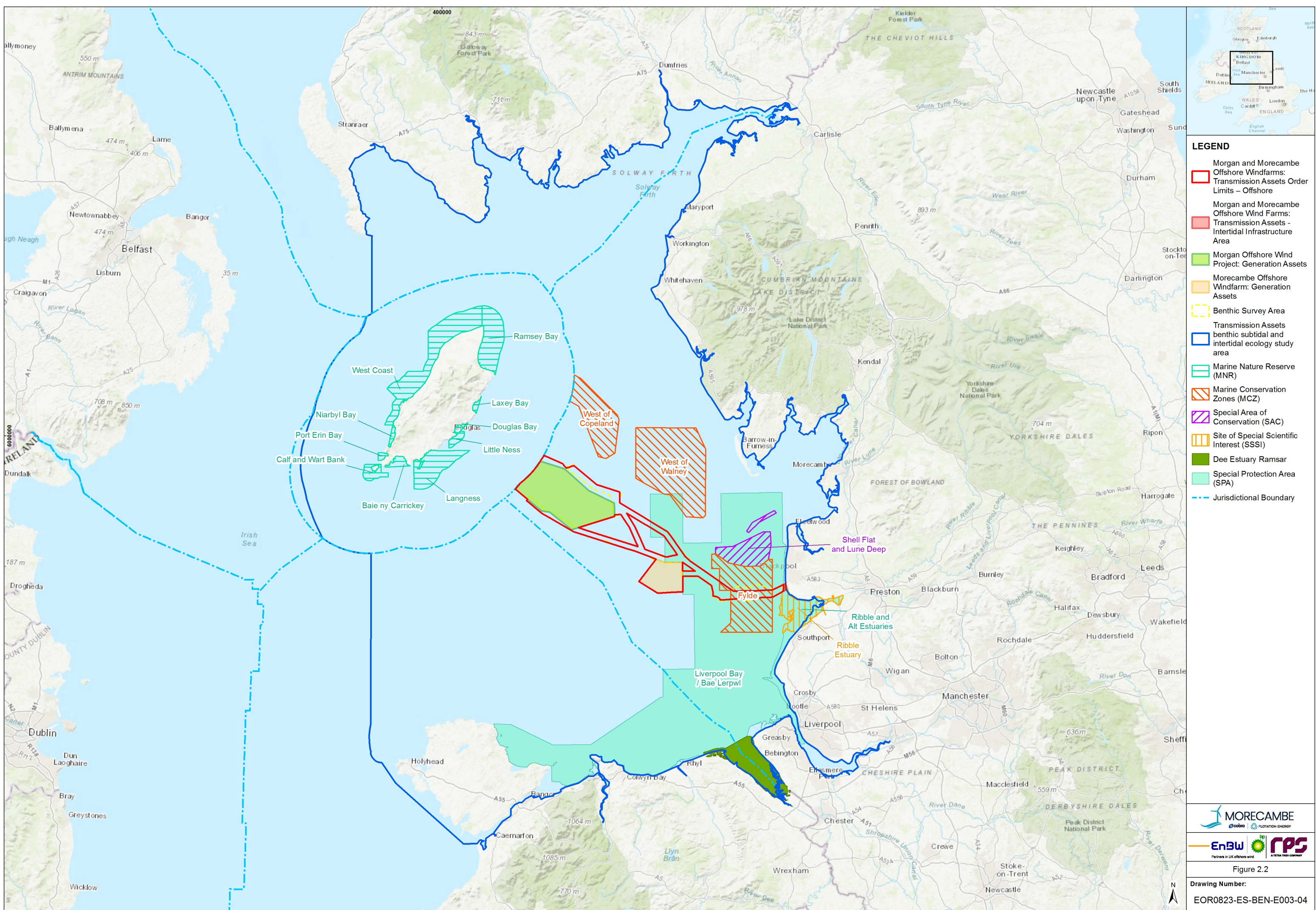


Geodetic Information:
Datum: ETRS 1989
Projection: ETRS 1989 UTM Zone 30N
Scale@379mmx231mm: 1:800,000

Data Sources: Client, The Crown Estate, MMO, NRW, ScotGov, MarineRegions.org

Service Layer Credits: Sources: Esri, HERE, Garmin, Intermap, increment P Corp., GEBCO, USGS, FAO, NPS, NRCAN, GeoBase, IGN, Kadaster NL, Ordnance Survey, Esri Japan, METI, Esri China (Hong Kong), (c) OpenStreetMap contributors, and the GIS User Community

VER	DATE	DETAILS	BY	CHECK
00	11/03/24	Initial Issue	M.J	HM
04	17/09/24	Final	M.J	BM



- LEGEND**
- Morgan and Morecambe Offshore Wind Farms: Transmission Assets Order Limits – Offshore
 - Morgan and Morecambe Offshore Wind Farms: Transmission Assets - Intertidal Infrastructure Area
 - Morgan Offshore Wind Project: Generation Assets
 - Morecambe Offshore Windfarm: Generation Assets
 - Benthic Survey Area
 - Transmission Assets benthic subtidal and intertidal ecology study area
 - Marine Nature Reserve (MNR)
 - Marine Conservation Zones (MCZ)
 - Special Area of Conservation (SAC)
 - Site of Special Scientific Interest (SSSI)
 - Dee Estuary Ramsar
 - Special Protection Area (SPA)
 - Jurisdictional Boundary

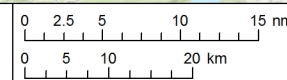


Figure 2.2

Drawing Number:
EOR0823-ES-BEN-E003-04

Project Name:
MORGAN AND MORECAMBE OFFSHORE WIND FARMS: TRANSMISSION ASSETS

Drawing Title:
DESIGNATED SITES WITH BENTHIC ECOLOGY FEATURES WITHIN THE STUDY AREA



Geodetic Information:
Datum: ETRS 1989
Projection: ETRS 1989 UTM Zone 30N
Scale@379mmx231mm: 1:900,000

Data Sources: Client, The Crown Estate, MMO, NRW, ScotGov, MarineRegions.org

Service Layer Credits: Sources: Esri, HERE, Garmin, Intermap, increment P Corp., GEBCO, USGS, FAO, NPS, NRCAN, GeoBase, IGN, Kadaster NL, Ordnance Survey, Esri Japan, METI, Esri China (Hong Kong), (c) OpenStreetMap contributors, and the GIS User Community

VER	DATE	DETAILS	BY	CHECK
00	11/03/24	Initial Issue	M.J	HM
04	17/09/24	Final	M.J	BM